



**4-PERSON MODULAR OFFICE WORKSTATIONS | SAPPHIRE CUBICLE SYSTEM |
6X8X39"H**



\$16,004.95

- **Overall Footprint Size:** 6'3"W x 32'7"D x 39"H
- **Individual Workspace Size:** 6'W x 8'D x 39"H
- **Panels Pictured:**
 - **Fabric:** None
 - **Laminate:** White
 - **Glass:** None
- **Worksurface Pictured:** Black Oak
- **Trim Pictured:** Silver
- **Storage Shown:** 3-Drawer Box/Box/File Pedestals



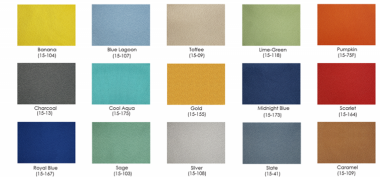
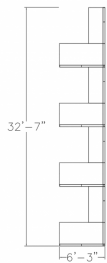
The configuration pictured is completely customizable! View our fabric and laminate options to the left.

1. Due to screen resolution and lighting variations color may look different in person from what you see in the image.

Contact one of our designers today to create your dream office at 1-888-993-3757 or e-mail sales@skutchi.com

SKU: SAPC-LC09-6x8x39

GALLERY IMAGES



PRODUCT DESCRIPTION

Why Buy Our 4-Person Modular Office Workstations?

Are you looking for 4-person modular office workstations? The [Sapphire Cubicle System](#) is our premier cubicle workstation product line. This commercial-grade cubicle system is both scalable and durable. Its



lightweight aluminum construction makes it a sound investment for any office or work place. Because of its modular design, any number of 4-person modular office workstations can be made. Also, the **Sapphire Cubicle System** features a variety of choices for the panels (multi-colored fabrics, patterned laminates, and tempered glass) and offers panels reaching 39", 52", and 65" in height. And don't forget, the **Sapphire Cubicle System** also offers electrical cord/data networking cable conduits along the base of each panel to hide cable clutter.

What Comes With This Product?

The 4-person modular office workstations pictured on this page shows our **Sapphire Cubicle System** divider panels with a L-shaped desk surfaces on both sides. You can select other colors for the panels, change the overall sizes of the worksurfaces, adjust the height of the panel divider walls, or select a different laminate for the worksurfaces if you'd like. Also, there are many extras you can add to your cubicle workspace such as locking storage bins, pedestal cabinets, accessory racks, monitor arms, paper trays, writing utensil holders, and many other features to complete your project. You can even replace the L-shaped worksurfaces with our [Quantum Sit-to-Stand](#) desks as an upgrade.

What Else?

Finally, it's important you have a clear understanding of all accessories and choices available for our 4-person modular office workstations. For this reason, we suggest you contact *SKUTCHI Designs Inc.* today. We'd be happy to answer your questions before your purchase.